

Annual Report

Where Excellence Meets Action



Table of Contents

2	A Message from Dean Melchert	10	Research Spotlight
3	Introduction	11	PILLAR 3: Statewide Engagement
5	PILLAR 1: Student Success	13	Alumni and Giving
7	Student Accolades	15	PILLAR 4: Diversity, Equity and Inclusion
9	PILLAR 2: Research	17	Faculty and Staff

A Message from Dean Melchert



Dear Friends,

Even in the face of significant tribulations and the turmoil of two years of pandemic, the UMKC School of Pharmacy had a tremendously successful and impactful 2021 thanks to

national and international scientific journals. Our 2021 graduates found outstanding postdoctoral training opportunities and jobs in clinical practice, academia, pharmaceutical industry or regulatory organizations.

Our faculty and students brought significant national and international prestige through their outstanding scholarly publications and through significant grant funding from the National Institutes of Health, private foundations and pharmaceutical industry. Their innovative work on targeted delivery of novel therapeutics, identifying new targets for disease intervention, understanding health behavior and developing better means of teaching and learning for our students.

Our success is entirely attributable to the hard work and dedication of our


“We continued to bring prestige and international visibility to UMKC and the University of Missouri System.”

– RUSSELL B. MELCHERT, PH.D.

our talented students, staff and faculty and their resilience and persistence.

We continued to bring prestige and international visibility to UMKC and the University of Missouri System. Our student organizations were again recognized among the top chapters in the country. Doctor of pharmacy graduates performed well on the NAPLEX and MPJE licensure exams. Many matched in prestigious residency positions. Doctor of philosophy students won international research awards and published cutting edge research articles in highly rated

students, staff and faculty, as well as state financial support and assistance from our partners at the University of Missouri in Columbia, Missouri State University, UMKC, the University of Missouri System, the UMKC Pharmacy Foundation and, of course, our alumni and donors. We are forever thankful to you all!

Sincerely,

Russell B. Melchert, Ph.D.
Dean and Professor

Introduction



The Kansas City Royals welcome UMKC and mascot Kacey Roo.

Two years into the COVID-19 pandemic, the UMKC School of Pharmacy has not wavered from its vision of **Shaping the future of health care and improving lives**. Innovation is but one of the eight key values that guide our efforts and, through sustained commitment, enables transformation that brings health and economic prosperity to communities in the state we serve. Our goal is to enhance opportunities in targeted areas and assist in meeting anticipated workforce needs. With that in mind, the School of Pharmacy is pleased to announce our recently approved **Emphasis Designation Track**, a program that allows students to focus elective studies on a specialized area of pharmacy through concentrated training. Students can now choose an emphasis in business and administration, research or public health and epidemiology. Students enrolled will graduate with unique experiences and additional qualifications attractive to employers and post-graduate education programs. The community

will also be better served through innovation and implementation of healthcare services. Innovation helps shape the future where outreach improves lives. Regardless of location, the care provided by our students, faculty and staff underscores the idea that UMKC is the place where excellence meets action. We have spearheaded multiple endeavors to enhance public health. From July through December of 2021, we led 64 vaccination and health screening events with students and faculty administering more than 1,500 vaccines. In addition, we conducted 560 health screenings for hypertension and diabetes with 148 patients referred to local health care providers or nearby emergency departments. From December 2020 through November 2021, UMKC assisted/delivered 34,661 doses of COVID vaccine across the state, supporting patients in the Kansas City, Columbia and Springfield areas.



Students enjoy gathering in front of the UMKC School of Pharmacy.



High school students learn about pharmacy in UMKC outreach program.

OUR 2020 - 2025 STRATEGIC PLAN

Our mission is the basis for the school's strategic plan. Each pillar of the plan supports our vision and reflects our dedication to education, scholarship, community outreach, diversity and inclusion.



STUDENT SUCCESS
Provide outstanding academic programs and experiences



RESEARCH
Attain national and international recognition for excellence in scholarship



STATEWIDE ENGAGEMENT
Enhance education, practice, public health and economic development



DIVERSITY, EQUITY AND INCLUSION
Foster an environment of multiculturalism, diversity, equity and inclusion



Student Success



Celebrating our graduates.

SUCCESS AND WELLNESS

COVID-19 had unwanted effects on education, in addition to its impact on the profession of pharmacy. While all required courses within the Doctor of Pharmacy program are taught in-person rather than online, students still risked disruption in learning from acute illnesses, mandatory quarantines, additional family responsibilities and increased work demands. In promoting a culture of wellness and resilience, new strategies promoting academic success were implemented. The Success and Wellness (SaW) program offers monthly sessions geared toward academic motivation, test anxiety, stress reduction, financial management and more. In addition, year four professional students can attend programming that will assist in their preparation for licensing exams.

REGALIA AND GRADUATION CEREMONIES

Traditional ways in which we recognize and celebrate graduating students morphed with restrictions, due to the pandemic. Professional and graduate students received their doctoral hood in one of two ceremonies that signified successful completion of the academic programs. Both ceremonies were held on the lawn adjacent to the Health Sciences Building in Kansas City.

UMKC held in-person ceremonies honoring 2021 graduates at Kauffman Stadium. Faculty, family and friends helped celebrate the hard work and accomplishments of the senior class. Thirteen senior students received at least one award upon graduation.

Saloni Patel was the school’s 2021 UMKC Dean of Students Honor Recipient. The honor recognizes high scholastic performance, active participation in University and community leadership, as well as service activities outside of the classroom.



Dean of Students Honor for Saloni Patel, left.

This year, the University conferred four Doctor of Philosophy degrees in Pharmaceutical Sciences:

STUDENT NAME	THESIS TITLE	ADVISOR	CAREER PLACEMENT
Alsalihi, Abdullah	“Enhanced Etoposide Solubility and Antitumor Activity Using Complexation and Nanotechnology”	Youan, Celestin	Assistant Professor, Jazan University School of Pharmacy, Saudi Arabia
Sikder, Sadia	“Novel Nanocarriers to Improve Drug Delivery for Age-Related Macular Degeneration”	Wyckoff, Gerald	
Yeruva, Taj	“Smart Hydrogel for Enzyme Responsive Vaginal Delivery of Anti-HIV Peptide Therapeutics”	Lee, Chi	Post-Doctoral Associate, University of Maryland, College Park, Maryland
Gote, Vrinda	“Nanomicelles and Liposomes for Improving Drug Delivery for Small Molecules and Sirna Therapeutic Agents”	Melchert, Russell	Lyophilization Scientist, Eurofins, West Point, Pennsylvania

BY THE NUMBERS

DOCTOR OF PHARMACY Class of 2025

113	Accepted Applicants
93	Applicants Matriculated
72%	Female
28%	Male
94%	Resident of Missouri
35%	Previous Baccalaureate Degree
3.5	Average GPA
13%	GPA > 3.9

Educational outcomes (5-year average)

92.6%	On-Time Graduation Rate
89.5%	NAPLEX first time pass rate*
89.3%	MPJE first time pass rate*

*above the national first-time pass rate

BY THE NUMBERS

DOCTOR OF PHARMACY Class of 2021 Post-Graduate Placement

54%	Employment
36%	Residency or Fellowship
0%	Seeking another degree
10%	Unknown

ASHP Residency Match Results

67	UMKC Residency Match Applicants
69%	UMKC SOP Residency Match Rate
65%	National Residency Match Rate

BY THE NUMBERS

DOCTOR OF PHILOSOPHY Pharmaceutical Sciences

34	Enrollment as of Fall 2021
35	Average enrollment over the last 5 years

Pharmacology

4	Enrollment as of Fall 2021
6	Average enrollment over the last 5 years

COMBINED POST-GRADUATE PLACEMENT

Fifty-three students were accepted into postgraduate residency or fellowship training programs. Thirty-seven of these students attended classes in Kansas City, seven students attended classes in Columbia and nine were from Springfield. Twenty-seven students (51%) will complete post-doctoral training in Missouri.

Student Accolades



UMKC Clinical Pharmacy Challenge team of Zach Carroll, Allison Baker and Austin Dockins.

ACCP CLINICAL PHARMACY CHALLENGE

Teams of three students from schools of pharmacy throughout the United States competed in a “quiz bowl”-type format. We congratulate our UMKC Clinical Pharmacy Challenge team of Zach Carroll, Allison Baker and Austin Dockins, who successfully navigated the first five rounds to reach the national semifinals, before being eliminated. Their sprint to the final four is the continuation of what is a growing legacy of excellence for the UMKC School of Pharmacy on the national stage. In 2020, the UMKC team won the Clinical Pharmacy Challenge national championship.

NCPA SERVICE AND STUDENT BUSINESS PLAN COMPETITION

The school is proud of its top 10 national finalist team of Brady Smith, Tanner Mitchell, Jane Beyer and Keaton Thomas, who participated in the Student Business Plan Competition. National finalists are recognized during the annual NCPA conference. Top 10 teams are also invited to submit an abstract of their business plan for presentation at the annual conference. Not only was the abstract accepted, but it also received top recognition, resulting in additional travel support.



Top recognition at business plan competition.



First place finisher Nitish Mishra.

SUCCESSFUL STUDENT RESEARCH SUMMIT

The annual UMKC Health Sciences Student Research Summit promotes collaborations across disciplines and schools to produce economic, health, education and quality of life benefits for the Kansas City community. The event brings the UMKC health sciences community together in a forum that highlights student research. Nitish Mishra won first place for a poster presentation in the graduate division that includes pharmacy, fifth- and sixth-year medicine, master’s degree students and medical residents. Mishra also placed second in the oral PowerPoint presentation category.



Missouri Pharmacy Association Student of the Year, Brady Smith.

MPA STUDENT OF THE YEAR

Brady Smith, a fourth-year student at the UMKC School of Pharmacy’s Missouri State University campus in Springfield, is the Missouri Pharmacy Association’s Student of the Year.

The award recognizes a pharmacy student for commitment to pharmacy and community, participation in pharmacy organizations and community involvement.



Student leader Madeline Clark

CLARK JOINS LEADERSHIP COUNCIL

The NCPA Student Leadership Council promotes the profession of pharmacy and supports the development of future leaders. The council is comprised of 16 members, serving two-year terms. Our NCPA student chapter president-elect, Madeline Clark, was one of eight students appointed to the Student Leadership Council.



Research



Research plays a large role in pharmacy education.

BY THE NUMBERS

RESEARCH ACTIVITY

10	Number of Research Proposals Awarded in 2021
6	Division of Pharmacology and Pharmaceutical Sciences
4	Division of Pharmacy Practice and Administration
Grants and Contracts Awarded	
12	2021 Active Grants and Contracts
8	Division of Pharmacology and Pharmaceutical Sciences
4	Division of Pharmacy Practice and Administration

BY THE NUMBERS

PUBLICATION OF ORIGINAL RESEARCH

26	Number of manuscripts published in 2021
11	Division of Pharmacology and Pharmaceutical Sciences
15	Division of Pharmacy Practice and Administration

Area of Emphasis

7	Drug Discovery
4	Drug Delivery
3	Pharmacotherapy-Infectious Disease
5	Clinical Studies-Outcomes
7	Teaching and Learning

Research Spotlight



High schoolers attending research program.

SUMMER INTERNSHIP PROGRAM OPENS EYES TO PHARMACY RESEARCH

Four Kansas City-area high school students participated in the inaugural, six-week summer research program at the School of Pharmacy. The internship was supported by a grant from Walgreens, with the intention of creating programs for the underserved and underrepresented population of greater Kansas City. The program provided students with the knowledge of pharmacy, pharmacy research and drug development, as well as the pharmacist’s role in improving health and well-being.

All four interns were paired with a graduate pharmacy faculty member conducting bench research. Each had the opportunity to apply hands-on laboratory and research methodology to develop a research project. Students communicated their research results through a poster presentation at the culmination of program. Our hope is that the students will continue their education in a way that will have an impact, not only on themselves, but on the health and welfare of people throughout the region.



Researcher Mark Patterson

GIFT SUPPORTS SCHOOL OF PHARMACY RESEARCH

The UMKC Foundation received a \$35,000 gift from the Jane & Jack Strandberg Charitable Foundation, Bank of America, N.A., Trustee, that will support ongoing research in the School of Pharmacy. For associate professor Mark Patterson, the gift is a unique funding source to support his study evaluating the challenges and benefits nursing home providers face using electronic health records (EHRs) to monitor patients and their prescriptions during transitions of care.

The gift will benefit community-related health by identifying how EHRs can be improved to share prescribing information and improve patient safety. A portion of the funding will enable the school to hire two pharmacy students to assist in the project, while advancing the student’s research skills, knowledge and abilities.

Patterson’s project is an extension of a previous study funded by the American Association of Colleges of Pharmacy, which evaluated the rates of medication discrepancies occurring during patients’ transition of care between hospitals and nursing homes in rural areas of Missouri. Patterson collaborated with Dr. Sandra Bollinger (B.S. ’84) to expose the issue of mismatched prescribing information during those transitions and the potential health risk those discrepancies pose to patients.

Patterson will work with Bollinger and Spencer Schaefer (PharmD. ’99) to review data from nursing homes located in rural areas of both Missouri and Kansas.



Statewide Engagement

Many farmers and their family members may not find it feasible to leave the farm for health-related reasons.

PHARM TO FARM

The AgrAbility Project helps farmers, farm workers and farm families, who are limited by a disability. The Missouri AgrAbility Project links the Cooperative Extension Service at land-grant universities with the nonprofit disability service organizations. Farmers are put at greater risk for medication-related injuries, due to the long hours working on a farm in close contact with heavy machinery and large animals. In addition, farm families living in rural communities may experience long trips for medical care. Many farmers and their family members may not find it feasible to leave the farm for health-related reasons.

In many rural Missouri areas, pharmacists fill health care gaps and are the first face farmers see for their health and safety. Pharm to Farm is a statewide outreach program developed by Dr. Kelly Cochran with Missouri AgrAbility Project that helps in fill in those gaps. The program was created to enhance the medication safety and quality of life of farmers by equipping future rural pharmacy practitioners



Pharmacy program bringing care to Missouri farmers

with knowledge and skills necessary for the delivery of pharmaceutical care and health outreach. Faculty-student teams conduct health screenings on personal farms and at public events. With Dr. Cochran's mentorship, Cassidy Jones (PharmD '22) planned a health screening at the Great Plains Growers Conference at Missouri Western State University in St. Joseph, Missouri. Pharmacy students conducted health assessments to identify at-risk individuals, since chronic obstructive pulmonary disease (COPD) and diabetes are more prevalent in rural areas.



Cassidy Jones (Pharm.D. '22) and Dr. Kelly Cochran

In addition, incontinence, sleep deprivation, pain and heart disease increase the rate of farm accidents. Unfortunately, medicines often cause dizziness, confusion, drowsiness, blurred vision, lightheadedness and gait problems, further increasing risk for injuries on farms.

Missourians from 44 counties were reached through the Missouri State Fair Health Screening program. Wellness screenings and referrals for additional care were provided. The program provided 52 diabetes risk assessments, resulting in five referrals, and 77 individuals were screened for high blood pressure, resulting in 13 referrals. Emergency services were called to triage one participant. The group educated 118 families about over-the-counter medication safety. Additionally, Medication List Wallet, Dispose RX kits and substance use disorder prevention education were provided to 83 individuals.



Lauren Damon, Haley Hurst and Amelia Godfrey

PHARMACY STUDENTS A WELCOME ADDITION AT HANNIBAL FREE CLINIC

Pharmacy students have provided care at Hannibal Free Clinic since the COVID pandemic began, after many of the clinic's volunteers were unable. Haley Hurst, the clinic's pharmacist and one of only four paid staff members, welcomed the help with open arms.

"We are mostly a volunteer clinic, run by retired nurses and office staff," Hurst said. "These students were really a saving grace for us. It really helped us bridge the gap because we basically lost almost all of our volunteers."

The clinic covers an area of six counties surrounding Hannibal, Missouri, providing primary care services for uninsured adults from 18-to-64 years old. It serves as many as 400 patients a year, with about 100 to 150 of them being part of the patient-centered medical home, a program of patients who meet with Hurst and her student pharmacists for additional education and medication management for diseases including, but not limited to, diabetes, high cholesterol, hypertension and smoking cessation.



Students keep free clinic up and running.

GOVERNOR PARSON PROCLAIMS OCTOBER TO BE AMERICAN PHARMACIST MONTH

Today's pharmacists play a critical role in health care, delivering vital services to patients and contributing to the overall health and well-being of their communities. In recognition of their contributions, Missouri Gov. Mike Parson proclaimed the month of October as American Pharmacist Month.

The governor's proclamation recognized Missouri's more than 7,000 licensed pharmacists as front-line health care providers, who are uniquely positioned to help ensure patients receive optimal medication therapy and properly adhere to medications, while serving as providers daily and during times of public health emergencies. Graduates of the UMKC School of Pharmacy reflect this valued character through their efforts working in a vast array of health care fields, from community pharmacy to specialized clinical fields, research, academia and more.



The American Pharmacist Month proclamation signed by Missouri Gov. Mike Parson.

Alumni and Giving



David Bates served in the U.S. Air Force before pharmacy.

Alum Has Vivid Memories of 9/11

Twenty years later, the horrifying events of 9/11 are etched in David Bates' (B.S./R. Ph. '93) memory. This alumnus proudly served as the lead pharmacist caring for responders at Ground Zero from a desk in a New York City hotel, following the 9/11 attacks.

Bates was on a recruitment trip at UMKC for the United States Public Health Service when news broke that terrorists had struck New York City. Finally able to connect with his superiors at the emergency response headquarters, Bates was told to immediately return home to Arizona and await further orders. A week later, when grounded flights were finally restored in the U.S., Bates received the order to report to New York. His assignment would be to requisition supplies and establish a pharmacy in support of the five treatment sites set up for response teams near Ground Zero.

Bates proudly served as the lead pharmacist caring for responders at Ground Zero from a desk in a New York City hotel, following the 9/11 attacks.

Bates established sick-call units for responders who had forgotten, or run out of, their medications for chronic ailments. He also located and requisitioned medical supplies to establish a pharmacy that could support the on-site medical clinics, which were seeing 400 to 500 volunteers, military and disaster responders each day. Many of those, Bates said, became ill with respiratory issues because of the large amounts of toxic dust in the air. Things became so intense that the chief of the U.S. Army medical corps came to Bates one morning with a special request. Cyanide gas was escaping into the air, and he needed cyanide antidote kits. Bates quickly called a pharmaceutical provider, AmerisourceBergan, and explained his problem. That afternoon, Bates had the kits in hand.

A military veteran, Bates served as a medic and pharmacy technician with the U.S. Air Force before deciding at age 40 to return to school at UMKC. After earning his pharmacy degree, he joined the U.S. Public Service Corps.

A True Following

School of Pharmacy alumnus Gene Ray follows the lead of his mentors in establishing a new research scholarship

Gene Ray, Ph.D., laughingly calls himself a professional lab rat. Throughout a distinguished career as a pharmaceutical sciences researcher, he has had a hand in bringing more than 40 new chemical entities and hundreds of reformulated generics to market for patient care.

Now, the 1989 UMKC School of Pharmacy graduate is laying the groundwork to help future scientists interested in following his path.

The Dr. Gene F. Ray Family Scholarship is a new award he's established at the School of Pharmacy to support graduate students in the Division of Pharmacology and Pharmaceutical Sciences who, like Ray, have a desire to conduct potentially life-changing research in the pharmaceutical world.

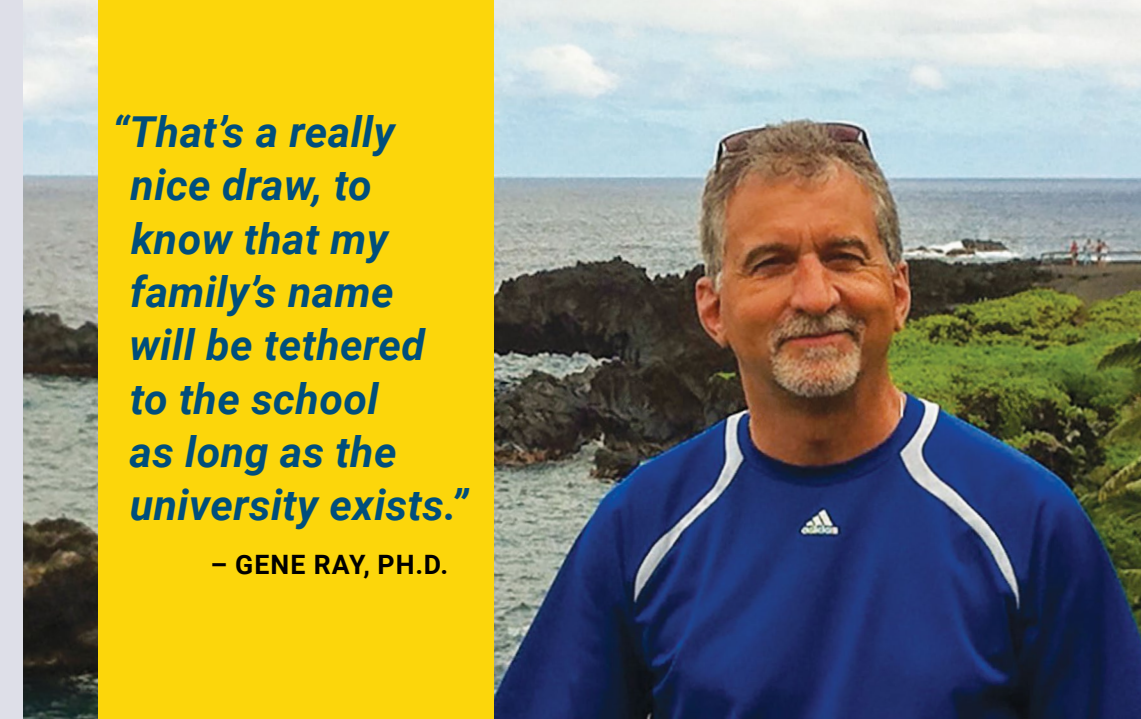
"I really don't take credit for any of this," Ray said. "It's just that I'm following my mentors' lead."

ACHIEVERS OF EXCELLENCE SCHOLARSHIP AWARD CEREMONY

In Fall 2021, the Pharmacy Foundation awarded more than 180 scholarships totaling more than \$300,000. Four new awards were given this year, including the Dr. Gene F. Ray Family Scholarship (endowed, class of 1989), the Class of 2021 Scholarship (annual, one-time award), Class of 2021 Springfield Scholarship (annual, established by the members of the Springfield class of 2021) and the Abdul Tufail Memorial Scholarship (annual, established by members of the class of 2014).

"That's a really nice draw, to know that my family's name will be tethered to the school as long as the university exists."

– GENE RAY, PH.D.



Alumnus Gene Ray following in the footsteps of his mentors.

While a graduate student at the School of Pharmacy, Ray worked closely with William Mason and Robert Lanman, UMKC faculty members who were both heavily involved in pharmaceutical research and development. The men and their families continued to make an impact on the school by establishing scholarship programs: the Robert C. Lanman Graduate Pharmacology Scholarship in 1992 and

the William D. Mason Memorial Graduate Scholarship in 2014.

"After Dr. Lanman passed away and I was looking at future retirement, 'I thought, 'now is perhaps the time that I might consider doing the same thing,'" Ray said. "I have an empathy for research. Drug development, obviously, I think is an exciting area. You feel like you're making a real impact."

SCHOOL OF PHARMACY PREPARES NEW SUMMER RESEARCH FELLOWSHIP

The UMKC School of Pharmacy's research and Ph.D. programs have been among the top half of U.S. pharmacy schools in extramural funding for decades. Now, the school is raising financial support for a new pre-doctoral summer research fellowship beginning in the summer of 2022.

The program will expose students to research and research opportunities earlier in their academic career. It will provide up to four summer positions for students to be actively

engaged in research activities at the School of Pharmacy. It is one of only a few such programs in the region for pharmacy students, providing hands-on experience with a stipend that is competitive with what they would earn in a typical summer internship.

Students will gain experience in understanding scientific methods of research, how scientists address problems, laboratory techniques, how to interpret results and analyze data and how to integrate theory and practice, among other skills.



Diversity, Equity and Inclusion



UMKC School of Pharmacy is a diverse community of learners.

The school is a learning community that enriches and values our human wealth, promotes civility, diversity, equity, inclusion and mutual respect. We continually seek to achieve a more diverse and inclusive faculty, staff and student body, as well as attain an organizational environment that acknowledges and celebrates diversity and employs inclusive practices throughout its daily operations.

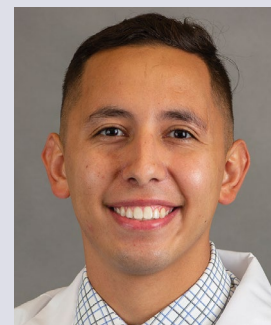
Integration of diversity, equity and inclusion throughout the curriculum equips our students to better serve their future patients. Many schools incorporate cultural competency/ cultural sensitivity into their curricula, but few publications exist that discuss implicit/ explicit bias, including strategies to reduce bias. Drs. Jennifer Santee, Kylie Barnes and Mark Sawkin collaborated with faculty at other institutions to determine whether there is an

association between implicit bias, explicit bias and responses to clinical cases assessing patients of a different race. Bias towards Black patients was found among a sampling of mostly first-year pharmacy students at six U.S. schools and colleges of pharmacy. This finding warrants further research to enhance curricular efforts to reduce or eliminate bias, thereby enhancing care for all patients regardless of race.

This study was published in the American Journal of Pharmaceutical Education 2022; 86 (1) Article 8587

CELEBRATING HISPANIC HERITAGE MONTH

In recognition of national Hispanic Heritage Month, in October, the School celebrated the accomplishments and contributions of members of our Latinx community who are making a difference in the health and welfare of their community and serve as an inspiration for others to succeed.



Olivas

UMKC mentoring program for Latino students), students engage with other Latinx students to feel supported.

CARLOS OLIVAS, a third-year pharmacy student, feels UMKC has allowed him to embrace his Latino heritage and the surrounding community. With programs like Avanzando (a

“With great advisors and numerous activities available, you can really grow as a student and a young Latino professional. Within the program, you are also paired with a mentor, and I have been fortunate enough to build a great relationship with my mentor. These relationships are incomparable and further illuminate UMKC’s commitment to representing underrepresented communities in the pharmacy profession.

“After school, I hope to work in either ambulatory care or hospital pharmacy that focuses on helping people of the underserved community. UMKC has helped me build my clinical and communication skills to a point to where I feel like my knowledge and voice can make a difference in the community.”



Rojas

DR. ULISES ROJAS is a 2021 graduate of the School of Pharmacy and currently practicing in Kansas City with Balls Food Price Chopper.

“I set out to be a community pharmacist with my priority being to work in an Hispanic community, where I could use my Spanish daily. Being intentional with that goal was very much supported at UMKC.

“Working as an intern during pharmacy school was very valuable to reinforce what we learned in the classroom. With UMKC being in the center of Kansas City, there are many internship options for students interested in all areas of pharmacy. And for those students with the skills of being bilingual, or wanting to practice Spanish in health care, there are plenty of those opportunities as well.”

BY THE NUMBERS

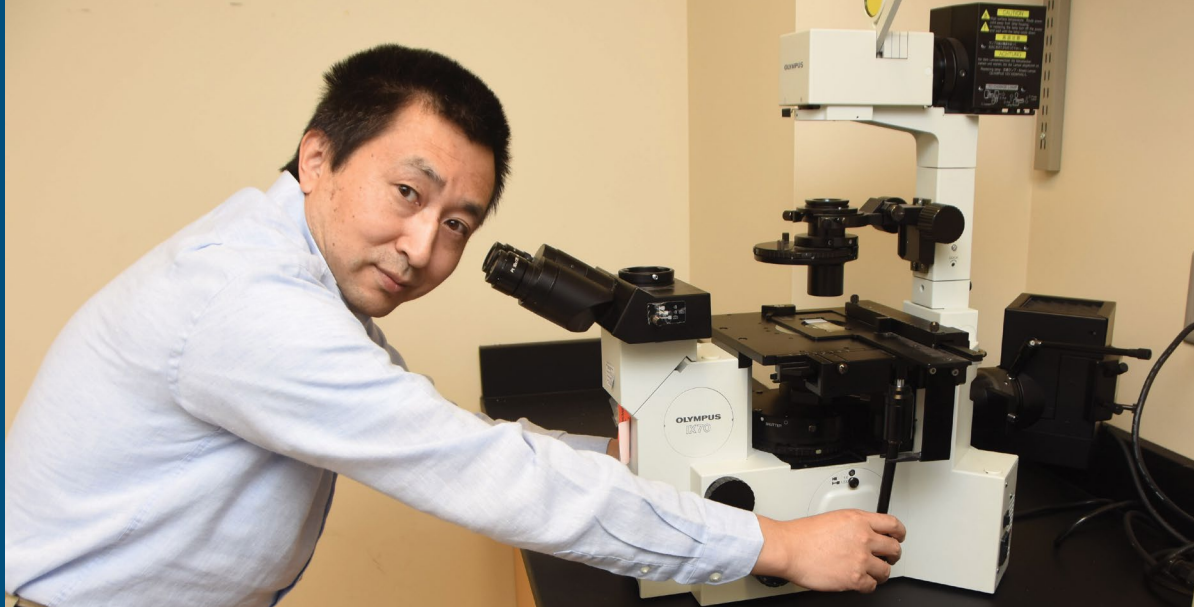
DOCTOR OF PHARMACY CLASS OF 2025

13%	First generation college student
11%	Underrepresented minority student
15%	Student speaks two or more languages

States represented by student:
ARKANSAS, ILLINOIS, KANSAS,
MISSOURI, TEXAS



Faculty and Staff



New researcher studying brain function.

FROM MEDICINE TO PHARMACY

For Associate Professor Xiangming Zha, expanding his network for collaboration was a critical consideration for his moving to UMKC. That network included a decade-long collaboration with Dr. Xiangping Chu at the UMKC School of Medicine. Zha expanded his network to include the UMKC School of Pharmacy in August 2021, continuing his research focused on brain function. His research centers around the study of pH in the brain that contributes to neuron

function and ischemic brain injury. In addition, he is also investigating the role of pH in cerebral vascular function.

In 2004, while in his post-doctoral fellowship at the University of Iowa, he saw an opportunity in this area-of-study because the field was less explored at the time. Prior to UMKC, he was at the University of South Alabama (USA) School of Medicine.



RHO CHI TEACHER OF THE YEAR

Amanda Stahnke, Pharm.D.
Excellence in teaching and intellectual inquiry.



CLASS OF 2020 TEACHER OF THE YEAR

Diana Tamer, Pharm.D.
Passion for educating pharmacy students, showing true interest and enthusiasm through knowledge and innovation.

BY THE NUMBERS	SCHOOL OF PHARMACY	
	20	Number of fulltime staff
	49	Number of fulltime faculty
	1:10	Faculty to professional student ratio
	31	Rank among pharmacy schools by US New and Workd Report



Marken enjoying her emeritus gift from the UMKC Pharmacy Foundation.

Travel Planning

Patricia Marken leaves a lasting legacy

Retirement has been good for professor emeritus Patricia Marken. She's deep in the weeds of travel planning, breaking it down like only a pharmacist knows how to do.

"That's your evidenced-based-medicine travel planning where you get to triangulate all the factors," Marken said, showing off her lengthy sheet of notes.

First is a vacation to Portugal and southern France. Ever the number crunching pharmacist, she's excited to travel without the constraints of workdays.



Chancellor's Award winner Kun Cheng, Ph.D.

"Now we can travel Monday through Thursday when the rates are cheaper," she said.

Marken says she particularly enjoyed having many roles during her time at UMKC.

"I didn't do the same job for 33 years, otherwise I would have lost my mind because I get fidgety and need new challenges," she said. "Thankfully, I had great bosses who allowed me to do different things that challenged me in sometimes difficult but mostly wonderful ways."

That included a sabbatical at Cerner with its instructional design group. Working with the health information technology company, an innovator in the field, expanded her abilities as an educator and her understanding of how to design curriculum for meaningful learning objectives.

She returned to UMKC as a faculty member and associate dean of student affairs in 2011. That provided a new challenge.

The role offered a new perspective on students and a fuller picture of the complexities of their lives. Marken said it was humbling to see all the factors that affect a struggling student that one doesn't always hear about as a faculty member.

"It is a true joy when a student who is struggling shows you their grit and amazes the heck out of you," Marken said. "When you're able to be a little piece of helping them find their path, it's like, there you go."

EXCELLENCE IN MENTORING

Kun Cheng, Ph.D., received the Chancellor's Award for Excellence in Graduate Mentoring. The award recognizes UMKC graduate faculty advisors with a long-established career at the university who have made significant contributions to higher education through exceptional mentoring.



Johnston

Students and Research Go Hand-in-Hand

Celebrating the career of Tom Johnston

There's one thing in particular that kept recently retired faculty member, Tom Johnston, going throughout his long tenure at the UMKC School of Pharmacy: the students.

"In the quarter century that I was at UMKC, it really came down to the students," Johnston said. "There is no question that the highlight of my career was teaching professional Pharm.D. students, as well as our Ph.D. seeking graduate students, watching them grow and learn more about pharmacy."

He's also particularly proud of his research in heart disease.

"I'm most proud of the mouse model that replicates atherosclerotic heart disease and ailments that's used worldwide," Johnston said. "It's very gratifying that people somewhere else in the world can actually use my model and get the results they need to explore new things."

Johnston said teaching still comes down to imparting knowledge on that next generation of pharmacists or researchers.

"I was a professor who believes in teaching by demonstration, which lends a sense of credibility to what you teach," he said. "It was always important to me to stand shoulder-to-shoulder with my graduate students and actually show them how to take a blood sample."

